



The Strength of Libraries: Measuring the Impact of Area Studies Library Collections and Services on International and Area Studies Programs

Presented at the 2013 NRC Conference: Demonstrating the Impact of National Resource Centers, held at Ohio State University, February 27-28, 2013.



Measuring and Sustaining the National Impact of LCTL Collections

Joe Lenkart, Thomas H. Teper, Mara Thacker, and
Steven W. Witt

History of Collecting at Illinois

From the Million Volume Library....

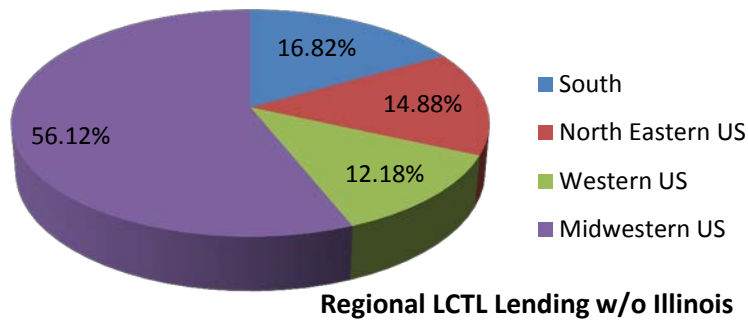
...to the 14-million volume Library.



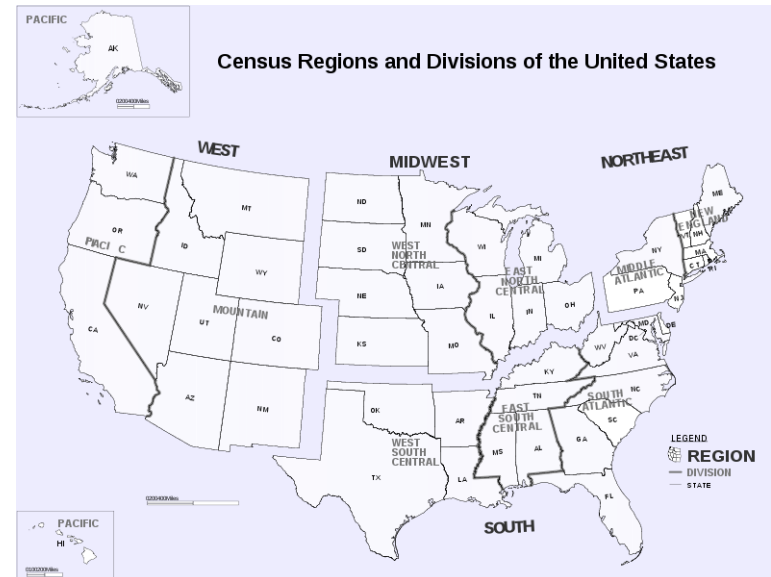
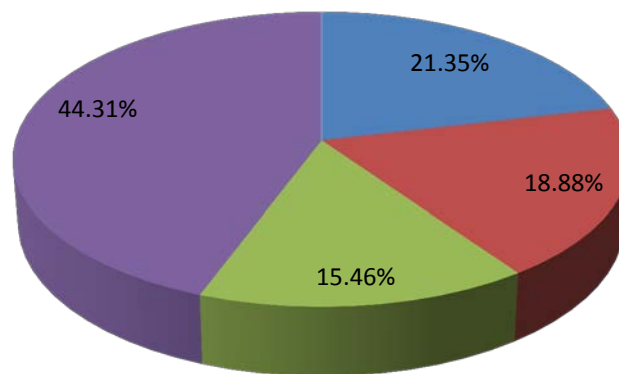


LCTL Borrowing by Region - 2011

Regional LCTL Lending w/Illinois



Regional LCTL Lending w/o Illinois





Impact of Aggregated Disciplinary Holdings

| | Total Loans | % LCTL | % Total Slavic |
|-------------|-------------|--------|----------------|
| 2007 | 44,812 | 10.18% | 5.12% |
| 2008 | 40,301 | 10.70% | 5.19% |
| 2009 | 39,038 | 10.92% | 5.45% |
| 2010 | 36,748 | 10.44% | 4.98% |
| 2011 | 34,593 | 10.22% | 4.84% |

Slavic Reference Service: Connecting Researchers and Collections

→ Integrated Catalogs
 → S.E.E.E LibGuides
 Туркестанский Сборник - Full text ^{NEW!!}
 S.E.E.E. Newspapers

Full text
 Research Guides ←
 The Russian Empire and Soviet Union:
 A Guide to Manuscripts and Archival
 Materials in the United States ^{NEW!!}



A Service Model in Numbers

| Subject | CountOfEntry |
|---------------------------------|--------------|
| Genealogy | 1 |
| Geography | 6 |
| Geology | 8 |
| Geophysics | 1 |
| Government | 5 |
| Grammar | 1 |
| Health | 11 |
| History | 204 |
| International Relations | 1 |
| Journalism | 1 |
| Language | 196 |
| Language teaching | 29 |
| Law | 34 |
| Law/Government | 1 |
| Libraries | 17 |
| Library and Information Science | 174 |
| Linguistics | 18 |
| Literature | 204 |
| Manufacturing | 1 |
| Mathematics | 4 |
| Media | 2 |
| Medicine | 72 |
| Metallurgy | 3 |
| Microbiology | 1 |

| Requesting Institution | Total Of Entry Number |
|--|-----------------------|
| Agricultural Research Service Department | 1 |
| American Museum of Natural History | 1 |
| CDC Library, Atlanta, GA | 1 |
| Department of State | 215 |
| Library of Congress | 4 |
| NASA | 1 |
| National Institute of Health | 4 |
| National Institute of Standards and Technologies | 13 |
| Smithsonian Institution | 3 |
| Smithsonian Tropical Research Institute | 2 |
| US Army Tank-Automotive and Armaments Command Armament Research Development and Engineering Center, NJ | 1 |
| US CIA | 1 |

Bibliographic Resources and Training Methodologies

Guides

[Bibliographic tools for researching Fedor Mikhailovich Dostoevskii \(1821-1881\)](#)

by [Slavic Reference Service](#) - last updated on Jun 17th, 2011
This guide is designed for Russian 522 students. Instructor: Prof. Harriet Murav

[Big Read: The Death of Ivan Ilyich](#)

by Helen Sullivan, [Slavic Reference Service](#) - last updated on Oct 14th, 2010

A guide to online resources in English about Tolstoy's "Death of Ivan Ilyich"

Tags: [literature](#), [slavic](#)

[Building Balkan Studies: Multidisciplinary Resources](#)

by [Slavic Reference Service](#) - last updated on Oct 15th, 2010
A guide to the many multidisciplinary resources for Balkan Studies.

Tags: [slavic](#)

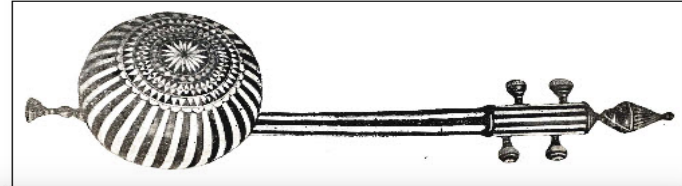
[Central Asian Sovereignty in the Face of Massive Economic Dislocation](#)

by [Slavic Reference Service](#) - last updated on Aug 17th, 2011
This guide is designed for 2010 Junior Scholars Training Workshop.
Moderator: Russell Zanca, Ph.D., Northeastern Illinois University, Anthropology

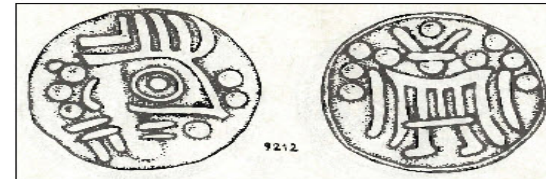
[Finding a Place in the Soviet Empire: Cultural Production and the Friendship of Nations](#)

by Helen Sullivan, [Slavic Reference Service](#) - last updated on Jun 27th, 2011
Supporting materials for the Fisher Forum 2011 which will explore the problem of empire, subjectivity, and cultural production in the Soviet Union.

Introduction to Uzbek Bibliography



National Bibliography of Georgia



Integrated Catalogs

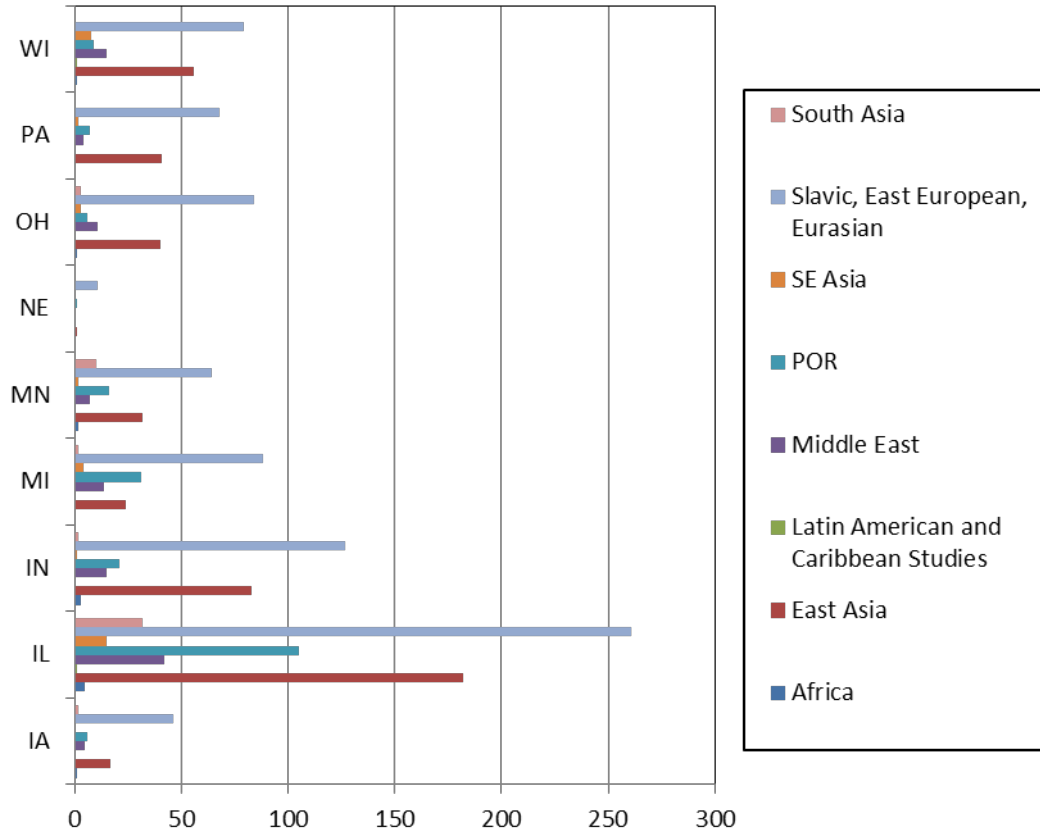
Here are some of the most helpful and widely used integrated library catalogs from across the region, information, which is used for Interlibrary Loan requests.



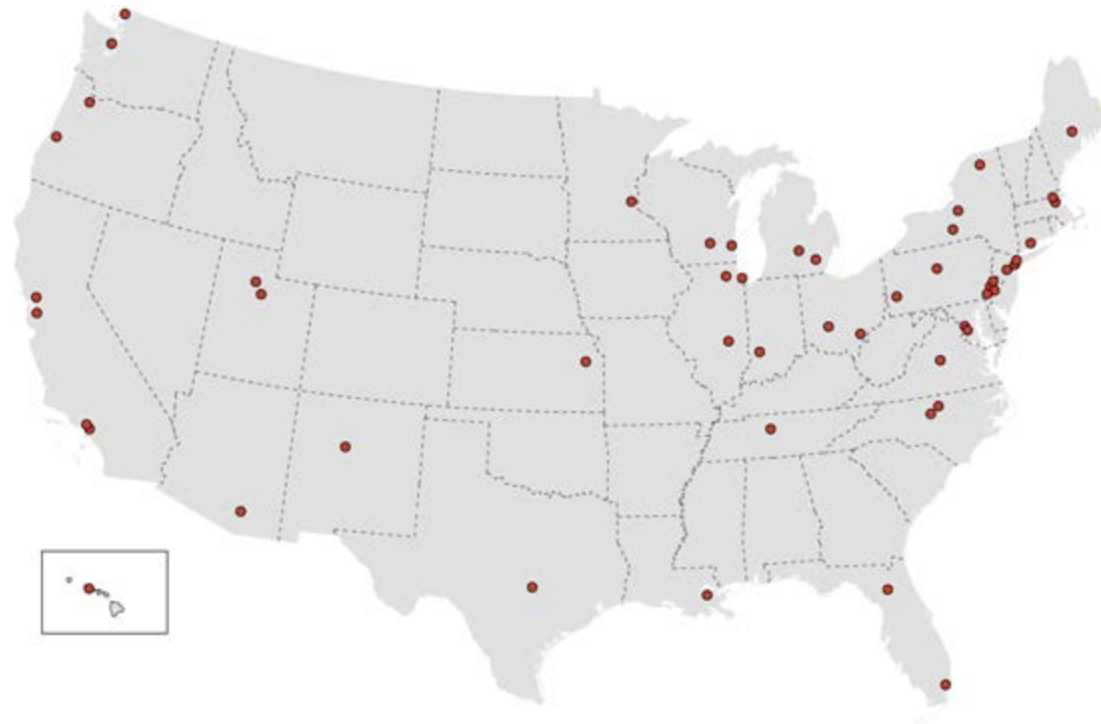
[Non-Latin Scripts in a Romanized World](#)

by [Slavic Reference Service](#) - Last Updated Feb 15, 2013
Introduces ILL librarians, scholars, and students to the basic skills and resources that will help them verify Slavic-related bibliographic citations, identify holding libraries, and complete ILL requests (or projects) with little to no wasted time

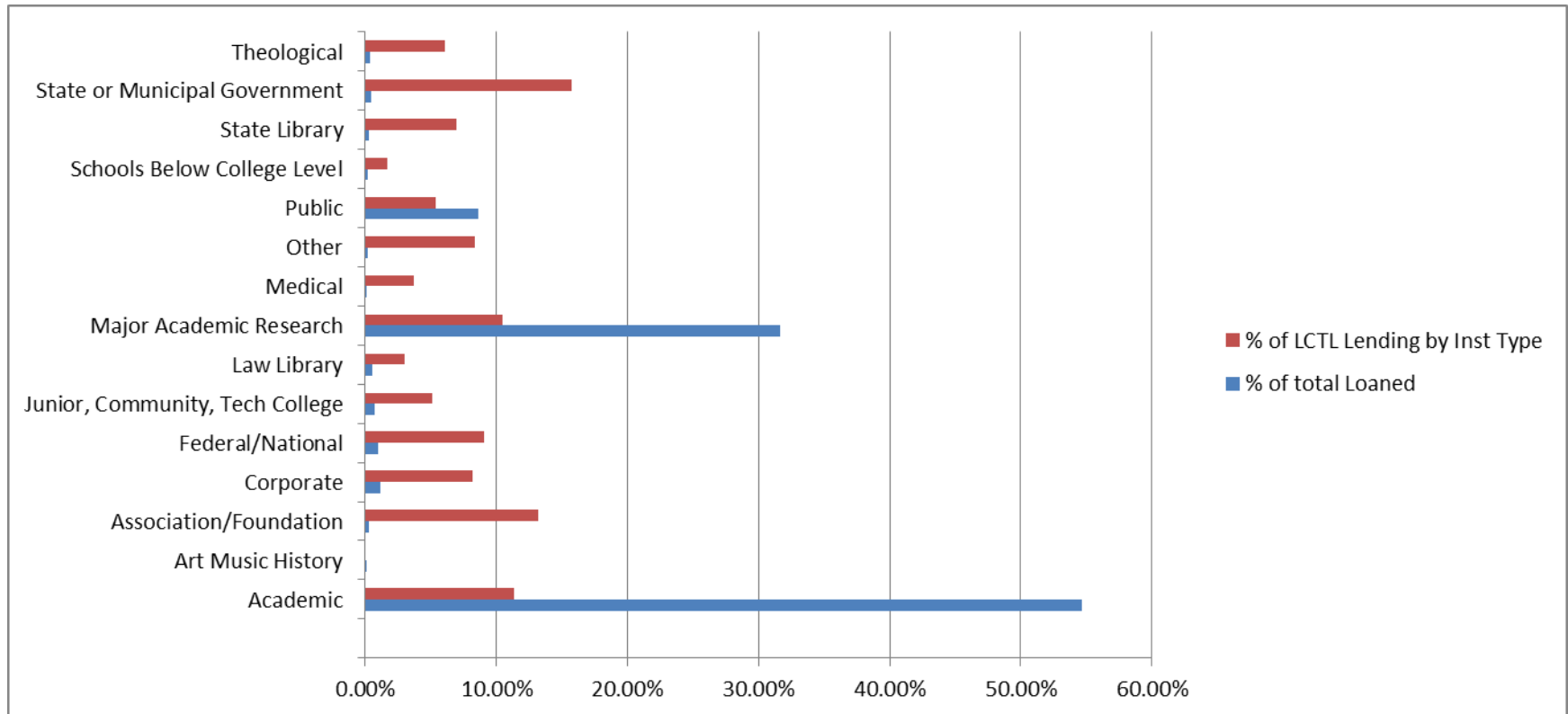
Beyond Slavic



Regional Impact Revisited



LCTL Lending by Institutional Type





A National Collection for South Asian Studies

University of Hawaii Holdings by Decade

| | 1910-1919 | 1920-1929 | 1930-1939 | 1940-1949 | 1950-1959 | 1960-1969 | 1970-1979 | 1980-1989 | 1990-1999 | 2000-2005 |
|----------|-----------|-----------|-----------|-----------|-----------|-----------|-----------|-----------|-----------|-----------|
| Bengali | 1 | 4 | 4 | 4 | 16 | 115 | 1145 | 3831 | 7262 | 197 |
| Hindi | 5 | 7 | 8 | 11 | 83 | 238 | 1944 | 5046 | 1965 | 259 |
| Sanskrit | 16 | 15 | 29 | 10 | 53 | 196 | 989 | 2092 | 1249 | 231 |
| Tamil | 1 | 5 | 6 | 4 | 11 | 58 | 677 | 2102 | 594 | 130 |
| Urdu | 0 | 2 | 0 | 1 | 7 | 67 | 69 | 305 | 779 | 114 |

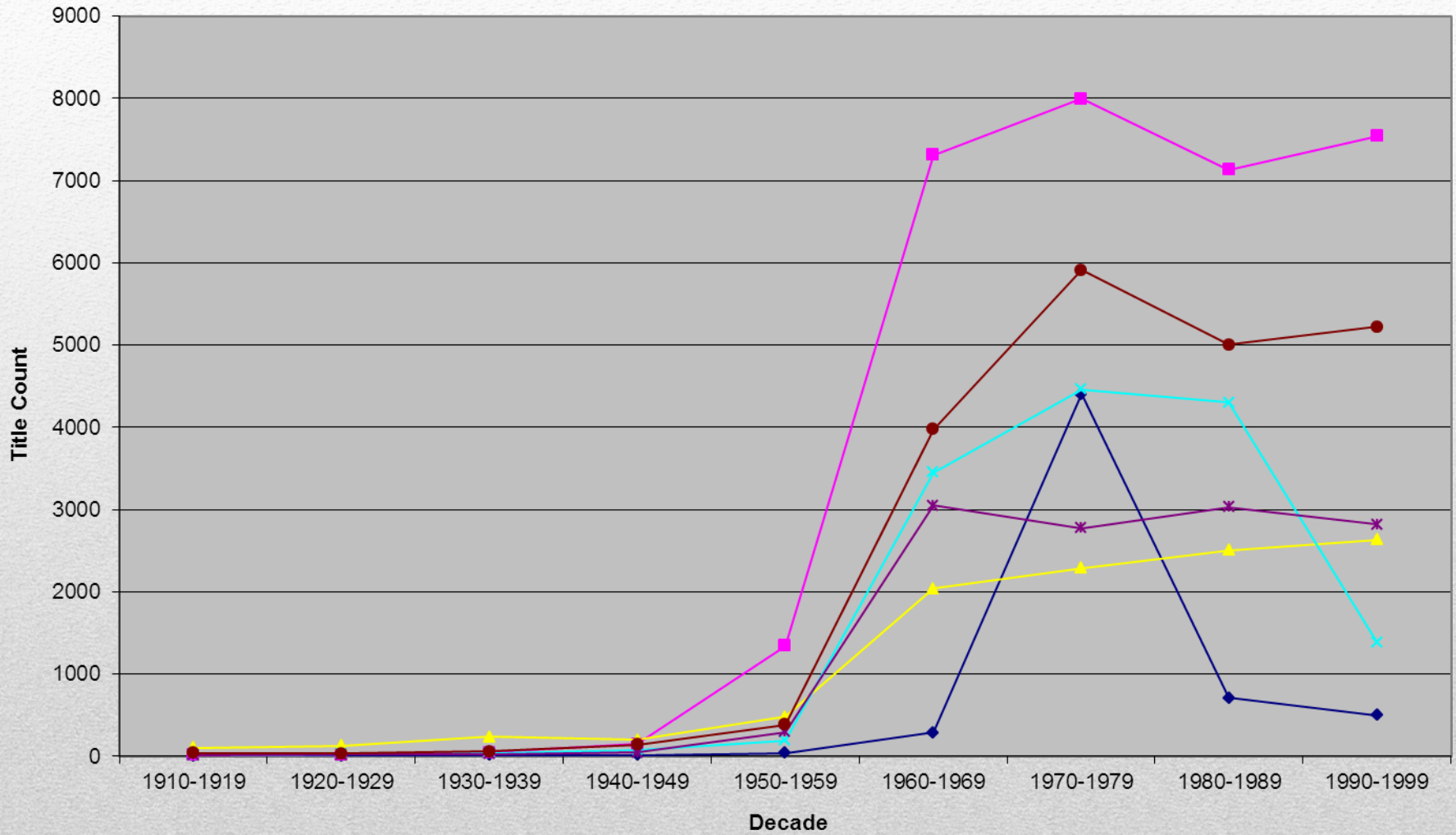
University of Texas Holdings by Decade

| | 1910-1919 | 1920-1929 | 1930-1939 | 1940-1949 | 1950-1959 | 1960-1969 | 1970-1979 | 1980-1989 | 1990-1999 | 2000-2005 |
|-----------|-----------|-----------|-----------|-----------|-----------|-----------|-----------|-----------|-----------|-----------|
| Bengali | 0 | 10 | 10 | 12 | 141 | 5888 | 5291 | 4088 | 3532 | 1018 |
| Hindi | 3 | 2 | 8 | 19 | 116 | 8024 | 8003 | 7456 | 9095 | 2103 |
| Malayalam | 1 | 0 | 2 | 3 | 23 | 2235 | 1712 | 592 | 1726 | 8 |
| Sanskrit | 27 | 57 | 62 | 60 | 175 | 1887 | 2062 | 2461 | 2882 | 878 |
| Tamil | 4 | 7 | 6 | 15 | 51 | 4117 | 3738 | 2978 | 2586 | 1115 |
| Urdu | 3 | 6 | 7 | 15 | 64 | 4549 | 4791 | 5207 | 4613 | 281 |

University of Washington Holdings by Decade

| | 1910-1919 | 1920-1929 | 1930-1939 | 1940-1949 | 1950-1959 | 1960-1969 | 1970-1979 | 1980-1989 | 1990-1999 | 2000-2005 |
|----------|-----------|-----------|-----------|-----------|-----------|-----------|-----------|-----------|-----------|-----------|
| Bengali | 3 | 8 | 9 | 12 | 59 | 1756 | 2335 | 1955 | 688 | 64 |
| Hindi | 8 | 9 | 25 | 55 | 129 | 7549 | 5518 | 6629 | 8148 | 3235 |
| Sanskrit | 102 | 149 | 209 | 151 | 312 | 1899 | 1821 | 2210 | 2344 | 1124 |
| Tamil | 2 | 4 | 4 | 15 | 57 | 2122 | 3096 | 2860 | 1425 | 39 |
| Urdu | 5 | 4 | 11 | 19 | 58 | 2732 | 3198 | 3564 | 3836 | 1054 |

University of Wisconsin Selected Language Holdings



◆ Bengali ■ Hindi ▲ Sanskrit ✕ Tamil * Telugu ● Urdu

2005-2006 LCCAP Profiles

Looking at the data in its entirety, some observations can be made:

1) Numbers of subscribers:

342 subject profiles have 3 or less subscribers

172 subject profiles have 10 or more subscribers

56 subject profiles have 20 or more subscribers

2) Non-English languages:

a. Languages having *more than 10* subscribers in *some or all* profiles:

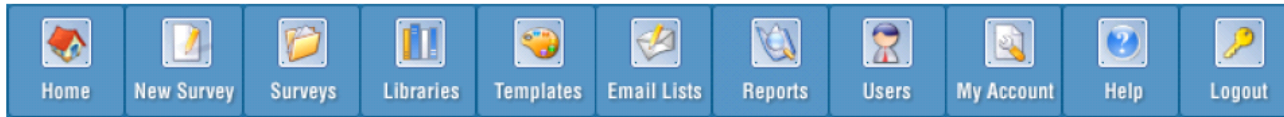
| | |
|---------|----------|
| Arabic | Sanskrit |
| Bengali | Tamil |
| Hindi | Tibetan |
| Pali | Urdu |
| Persian | |

b. Languages having *under 10* subscribers in *all* profiles:

| | | |
|-----------|---------|------------------|
| Gujarati | Nepali | Rajasthani |
| Kannada | Newari | Sindhi |
| Kashmiri | Panjabi | Sinhalese |
| Malayalam | Prakrit | Telugu |
| Marathi | Pushto | Tribal Languages |

c. Languages having *under 3* subscribers in *all* profiles:

| | |
|----------|----------|
| Assamese | Manipuri |
| Konkani | Oriya |



Survey Results -- Overview

[Export Data](#) [Individual Responses](#)

CONSALD Cooperative Collection Development

Respondents: 40 displayed, 40 total

Status: Closed

Launched Date: 03/26/2007

Closed Date: 05/18/2007

Display:

[Manage Filters](#)

0 filters

[Share Results](#)

Enabled

1. What is your current expertise in South Asian Studies?

| | | Response Total | Response Percent |
|--------------------------|-----------|----------------|------------------|
| view | Languages | 23 | 92% |
| view | Subjects | 22 | 88% |
| view | Regions | 21 | 84% |
| view | Other | 5 | 20% |
| Total Respondents | | 25 | |
| (skipped this question) | | | 15 |

2. What are your current institutional interests or priorities in South Asian Studies?

| | | Response Total | Response Percent |
|----------------------|-----------|----------------|------------------|
| view | Languages | 23 | 92% |
| view | Subjects | 22 | 88% |

The Committee on South Asian Libraries and Documentation

**Tools for Building a National South Asia Collection:
Analysis of the CONSALD Online Survey**

August 20th, 2007

Potential cooperative collection development among members of the Committee on South Asian Libraries and Documentation (CONSALD) would focus on creating a robust national South Asia collection. At a time when library budgets are static or declining, cooperative projects enable libraries to pool resources for ensuring that critical and lesser-used materials continue to be purchased and made accessible to researchers.

Identifying where a cooperative project for the collection of South Asia materials should focus its efforts is a major concern in this report. Using information generated in an online survey among CONSALD members, it attempts to present this information in a manner conducive to approaching questions of project implementation.

Information from the online survey highlights the major contours of collection priorities, institutional needs, and expertise among South Asia bibliographers. Twenty-three (23) respondents took part in the survey and it was viewed by a total of forty (40) people. The survey took place between March 26th and May 28th, 2007; and had a total of thirty-five (35) questions. Not every question was answered by each respondent.

*Center For Research Libraries
6050 S. Kenwood Avenue
Chicago, IL 60637-2804
U.S.A.*



*Tele: 773-955-4545
Fax: 773-955-4339
Toll free: 800-621-6044
Web: www.crl.edu*

CALL FOR PARTICIPANTS

Cooperative Collection Development for South Asia Partnership Workshop
Friday, October 15, 2010, 9:00-1:00
Madison, WI

BACKGROUND

South Asian library collections have long benefited from cooperation in developing collections of distinction. PL-480 and the subsequent SACAP programs may be the most long-standing and recognized, but partnerships and sharing strategies have also been worked out through initiatives such as CRL, SAMP, regional consortia (SACEast, CIC, and SACWest), cooperative cataloging projects (LC, OCLC, SAUC), and digital projects (DSAL). Recent and looming budgetary, space and user-preference demands have forced us to rethink and re-strategize how we might best serve the local, national and international South Asian Studies communities. Because of our long-standing history of successfully working together, we believe these impending demands and needs can be met through collaboration.

Although many librarians and library administrators believe in the possibilities of cooperative collection development in the abstract, many are reluctant to embrace the opportunities to do so, citing anxieties over immediate local teaching and research needs, statistical ranking measures and logistics of interlibrary loan as well as affective concerns. Despite indicators that these benchmarks are changing (for example, 2010 Title VI CFP highlighted inter-institutional collaboration and access over local ownership and the CIC Directors are looking to consolidate models for area studies collections and services), these concerns are still very real and often times palpable. Yet, we believe that not

SOUTH ASIA COOPERATIVE COLLECTION DEVELOPMENT INITIATIVE STATEMENT OF ACCESS AND PRESERVATION PRINCIPLES

The South Asia Cooperative Collection Development Initiative functions to reduce duplication of and to facilitate access to diverse resources on South Asia across participating institutions. Working within the Library of Congress' South Asia Cooperative Acquisitions Program profiles, each participating institution will commit to specific collecting areas to the benefit of the entire group. In order to maintain and support this cooperative benefit indefinitely, we uphold certain access and preservation principles:

- 1) Each library is expected to commit to acquire current library materials in specific subjects and areas, and to maintain the level of purchasing power needed to satisfy the depth and extent of collecting for the areas selected.
- 2) Each library is expected to process incoming materials and to make their cataloging available on OCLC in a timely manner.
- 3) Each library is expected to make acquisitions available for interlibrary loan.
- 4) Each library is expected to retain and preserve materials collected under the auspices of the initiative to the extent practicable. If retention and preservation becomes impossible at any individual institution, the expectation is that materials will be offered to the collective before disposal.
- 5) Each institution will notify the other parties if it wishes any change in their areas of collecting as defined by this agreement.
- 6) This agreement will not preclude further purchase or duplication of materials judged to be needed by any of our collections.

We recognize that individual institutional circumstances will change over time and so we are committed to periodic review and revision. Annual reviews will occur in conjunction with the fall meeting of CONSALD at Madison.

LCCAP Distribution Based on Institution

| Institutional Totals | |
|-----------------------------|-----------|
| 1 (LC-Washington) | \$205,207 |
| 3 (Berkeley) | \$120,452 |
| 6 (Minnesota) | \$90,466 |
| 7 (Cornell) | \$55,057 |
| 10 (Washington) | \$67,784 |
| 11 (Wisconsin) | \$66,962 |
| 12 (Duke/TRLN) | \$55,723 |
| 13 (Columbia) | \$113,150 |
| 14 (Virginia) | \$46,821 |
| 15 (Michigan) | \$106,066 |
| 16 (Illinois) | \$51,186 |
| 17 (Syracuse) | \$11,218 |
| 22 (UCLA) | \$22,567 |
| 25 (Iowa) | \$47,585 |
| 30 (Emory) | \$41,320 |
| OC (CRL) | 0 |
| 48 (NYU) | \$25,055 |
| Princeton | \$0 |

LCCAP Distribution by Language

| Language Totals | Total Available in Profile | Total subscribed by Participants |
|------------------------|-----------------------------------|---|
| Bengali (Bangladesh) | \$3,320 | \$8,280 |
| Bengali (India) | \$3,365 | \$9,630 |
| Gujarati | \$1,925 | \$3,130 |
| Hindi (India) | \$18,475 | \$79,950 |
| Kannada | \$3,030 | \$3,925 |
| Malayalam | \$1,460 | \$1,740 |
| Marathi | \$7,015 | \$10,285 |
| Nepali (Nepal) | \$1,755 | \$4,930 |
| Oriya | \$1,470 | \$1,870 |
| Panjabi | \$1,915 | \$4,325 |
| Sanskrit | \$5,795 | \$35,070 |
| Sinhala | \$1,245 | \$2,500 |
| Tamil (India) | \$2,225 | \$5,265 |
| Tamil (Sri Lanka) | \$325 | \$1,300 |
| Telugu | \$2,055 | \$3,870 |
| Tibetan | \$8,340 | \$56,600 |
| Urdu | \$3,180 | \$11,070 |

52 DELETIONS, \$8,350

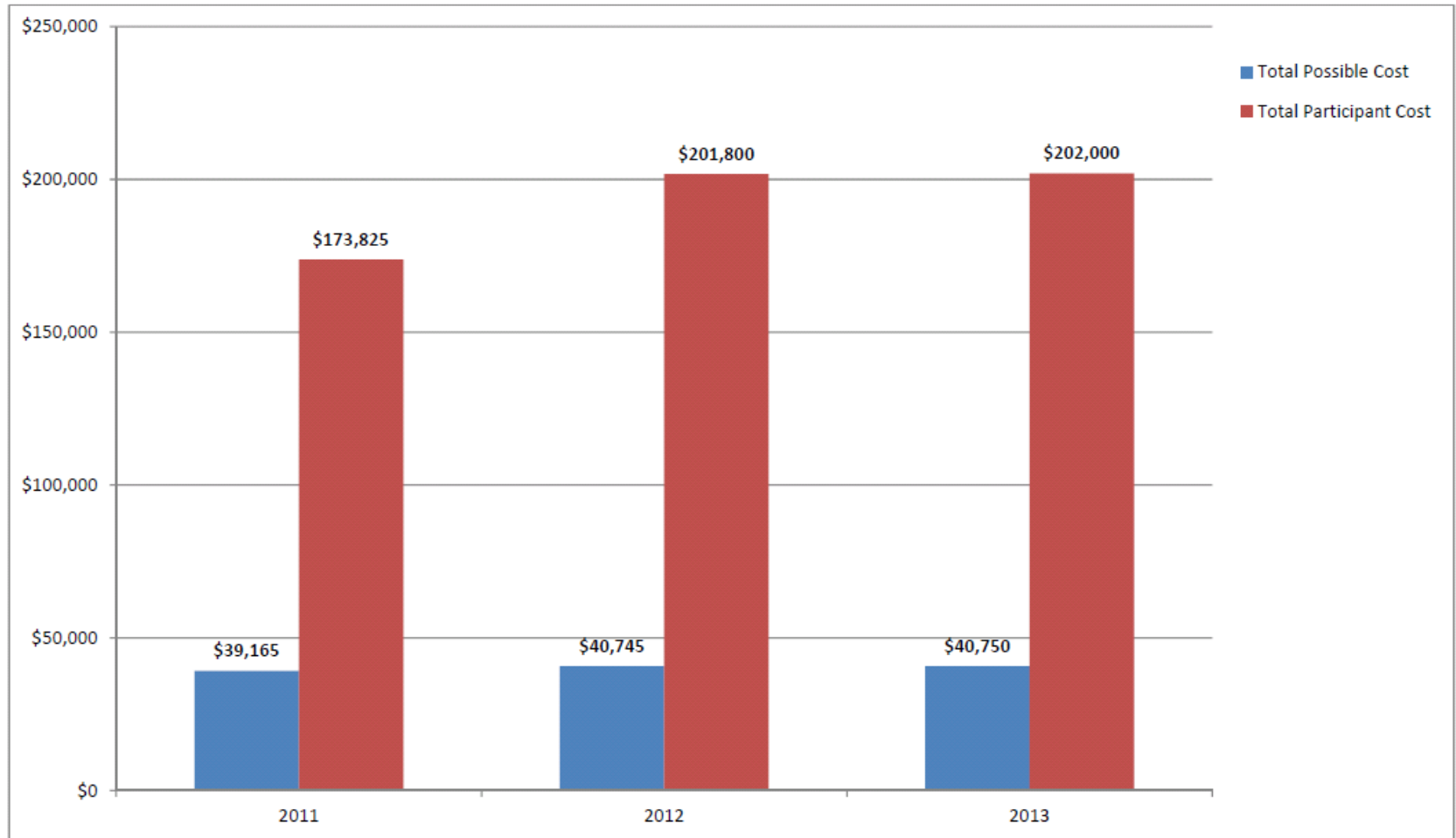
| INSTITUTION | PROFILE | AMOUNT |
|-------------|---|--------|
| Berkeley | Bengali: 21: 90: South Asia History, Comprehensive | \$50 |
| Berkeley | Bengali: 21: 91: South Asia History, Representative | \$50 |
| Berkeley | Hindi: 21: 90: South Asia History, Comprehensive | \$300 |
| Berkeley | Sanskrit: 2: Religions, Comprehensive | \$300 |
| Berkeley | Telugu: 21: 90: South Asia History, Comprehensive | \$25 |
| Berkeley | Telugu: 21: 91: South Asia History, Representative | \$25 |
| Columbia | Bangladesh Bengali: 10: Literature, Representative | \$25 |
| Columbia | Bangladesh English: 26: Social Welfare | \$500 |
| Columbia | English: 11: 91: Buddhism, Representative | \$150 |
| Columbia | English: 20: 92: Decorative Arts, Selective | \$400 |
| Columbia | English: 22: 92: Performing Arts, Selective | \$275 |
| Columbia | Nepal English: 26: Social Welfare | \$30 |
| Columbia | Nepal Nepali: 7: Linguistics | \$50 |
| Cornell | English: 56: South Asia Civilization, GAC 1-26, 28, 30-32, 36 | \$220 |
| Illinois | English: 4: Occult Sciences | \$50 |
| Illinois | English: 85: 90: Agri-economics, Comprehensive | \$150 |

186 ADDITIONS, \$10,677

| INSTITUTION | PROFILE | AMOUNT |
|-------------|---|--------|
| Berkeley | Gujarati: 13: Literary History and Criticism, Selective | \$125 |
| Berkeley | Gujarati: 21: 92: South Asia History, Selective | \$50 |
| Berkeley | Gujarati: 3: Religions, Representative | \$25 |
| Berkeley | Kannada: 13: Literary History and Criticism, Selective | \$300 |
| Berkeley | Kannada: 21: 92: South Asia History, Selective | \$125 |
| Berkeley | Kannada: 3: Religions, Representative | \$25 |
| Berkeley | Kannada: 4: Religions, Selective | \$75 |
| Berkeley | Malayalam: 13: Literary History and Criticism, Selective | \$50 |
| Berkeley | Malayalam: 21: 92: South Asia History, Selective | \$40 |
| Berkeley | Malayalam: 4: Religions, Selective | \$30 |
| Berkeley | Panjabi: 10: Literature, Representative | \$125 |
| Berkeley | Panjabi: 11: Literature, Selective | \$100 |
| Berkeley | Panjabi: 9: Literature, Comprehensive | \$125 |
| Columbia | Bangladesh Bengali: 11: Literature, Selective | \$100 |
| Columbia | Bangladesh Bengali: 13: Literary History & Criticism, Selective | \$75 |
| Columbia | Bangladesh Bengali: 23: Islamic Law | \$100 |
| Columbia | Bengali: 21: 91: South Asia History, Representative | \$50 |

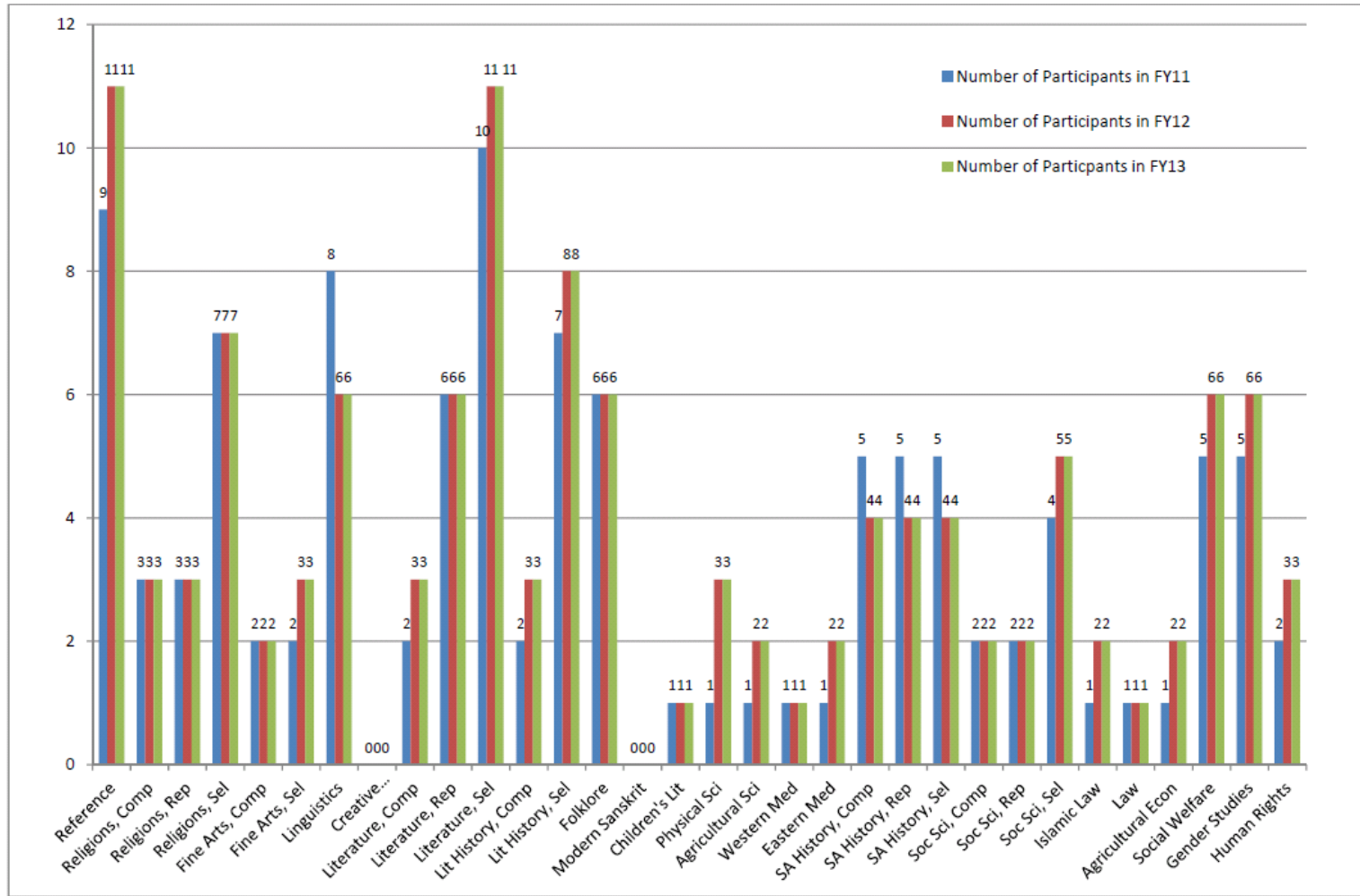
Changes to SACAP Monographs through Cooperation, 2010-2013

Table 2: Total LC Non-English Monographic Offerings and Workshop Participants Participation



Changes to SACAP Monographs through Cooperation, 2010-2013

Table 6: Total LC Hindi Monographic Offerings and Workshop Participants Participation (Profiles)



NRC Support for Libraries An Assessment

Kristina Troost
Duke University

Presented at the 2013 NRC Conference: Demonstrating the Impact of National Resource Centers, held at Ohio State University, February 27–28, 2013.

East Asian NRC Funding Support

| Funding | # of institutions | Range of cuts FY 12 |
|---------------------|-------------------|--------------------------|
| Library | 17 | 33-100% |
| Acquisitions | | |
| Librarian travel | 8 | 50-100%; two did not cut |
| Professional staff | 4 | 23-50%; one did not cut |
| Library interns | 0 | n/a |
| Student workers | 4 | 50-66%, one did not cut |
| Travel for visitors | 3 | 13-50%, one did not cut |
| Digitization | 2 | 33-50% |
| Projects | | |

Thank you.